

POLLINATOR GARDEN



What other animals cooperate with plants?

Many animals are pollinators. Can you name some animals that visit plants?

Some bats are pollinators. What do you think these bats eat? Some bats aren't pollinators. What do you think a bat that isn't a pollinator eats?



How do plants make more plants?

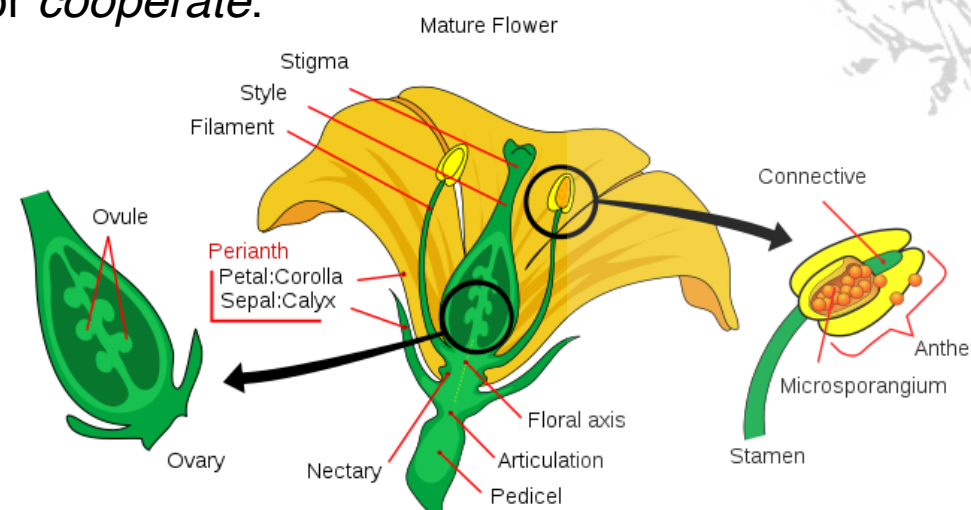
With *pollen*! Pollen often looks like little grains of yellow dust. If you look carefully, you can see that the bee in this picture is covered in pollen.

Bees help plants make more plants by taking the pollen from one plant to another. How do the plants help the bees? The bees use the *nectar* from the plants to make honey! An animal that takes pollen from one plant to another is called a *pollinator*.

Where is the nectar for most plants? Where is the pollen? Are the nectar and the pollen close together? Why do you think that might be helpful for the plants?

Bees and plants work together, or *cooperate*.

Can you think of a way that you cooperate?



Are pollinators important?

Most of our food comes from plants. Pollinators help us make one out of every three bites of food we eat!

There are fewer pollinators now than there used to be. Why do you think there might be fewer pollinators?

Pollinator gardens give pollinator animals a place to eat, rest, and raise their families.

Which plants in our Foothill Garden are good for pollinators? What kinds of pollinators do the plants in our Garden invite?

Thank you to Yamagami's Nursery for the gift of their time and the donation of pollinator plants!

